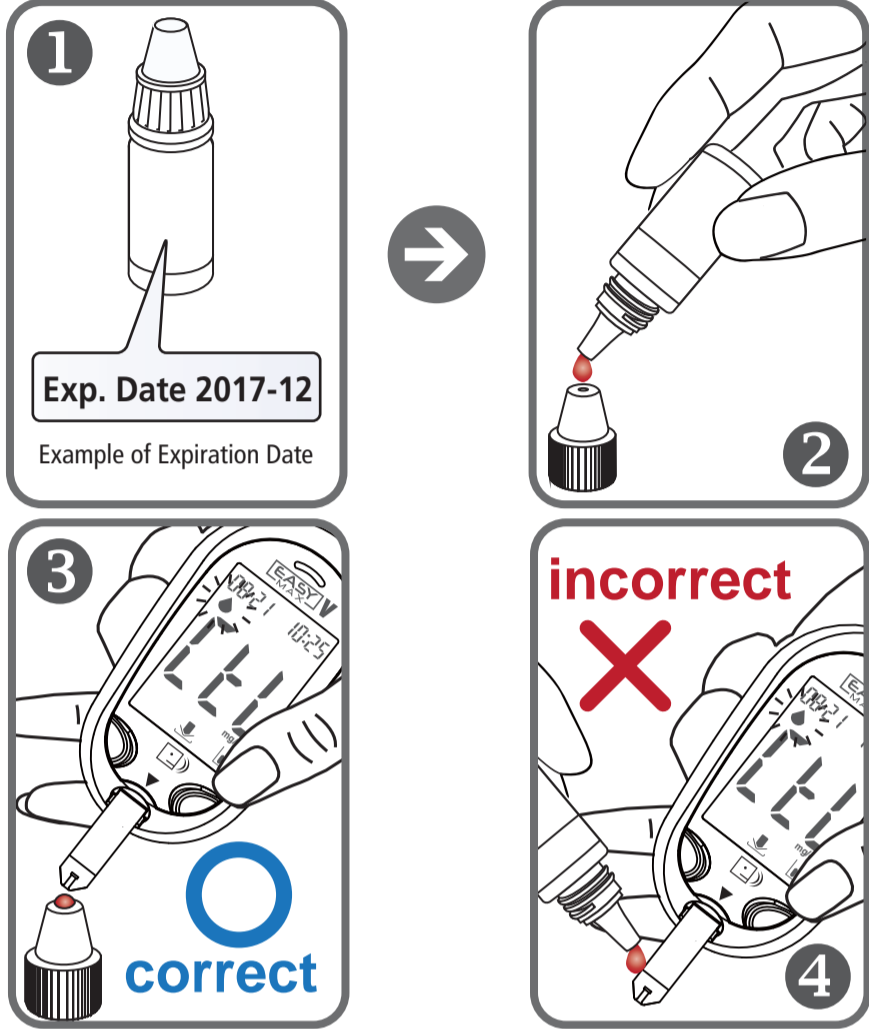
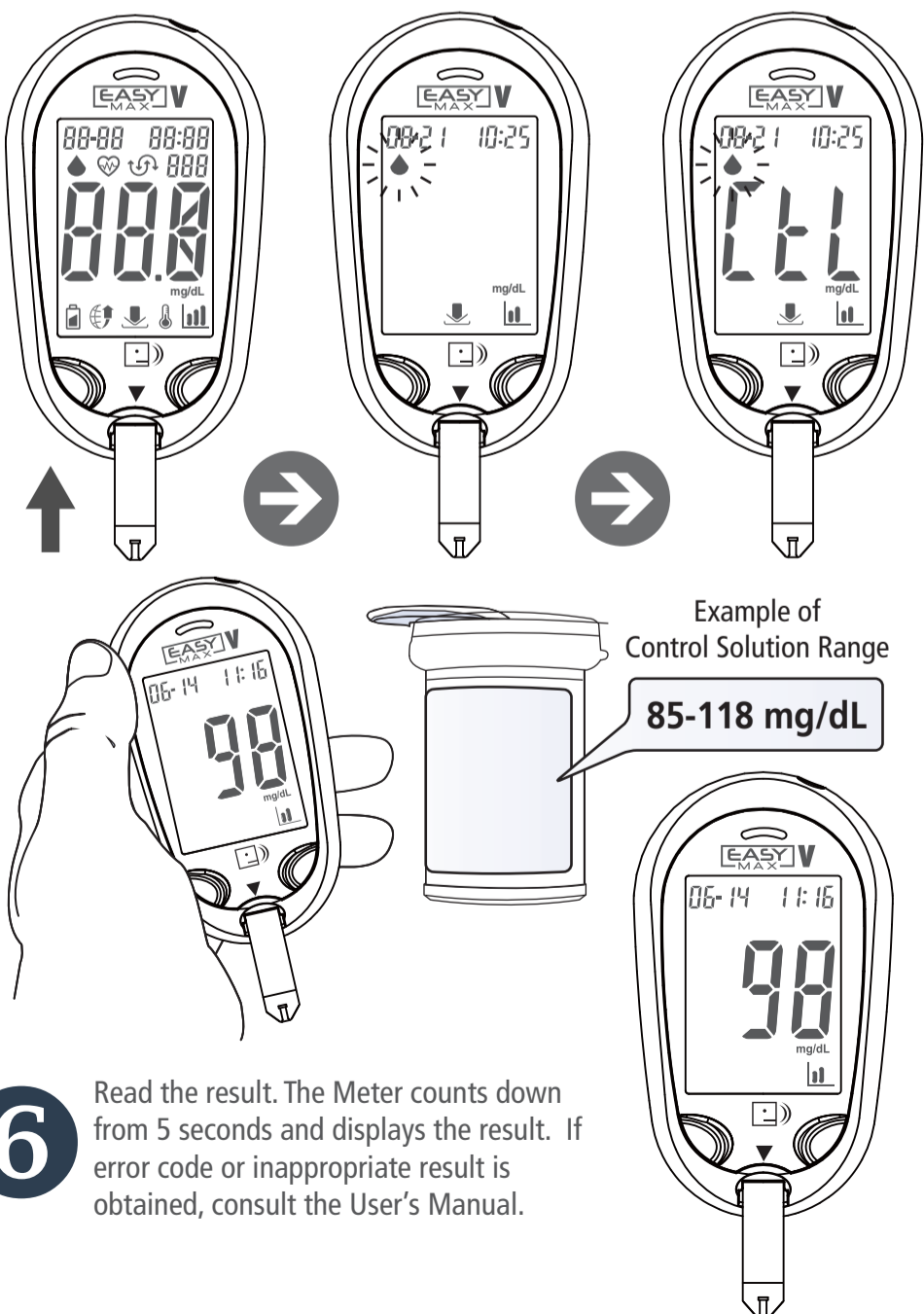


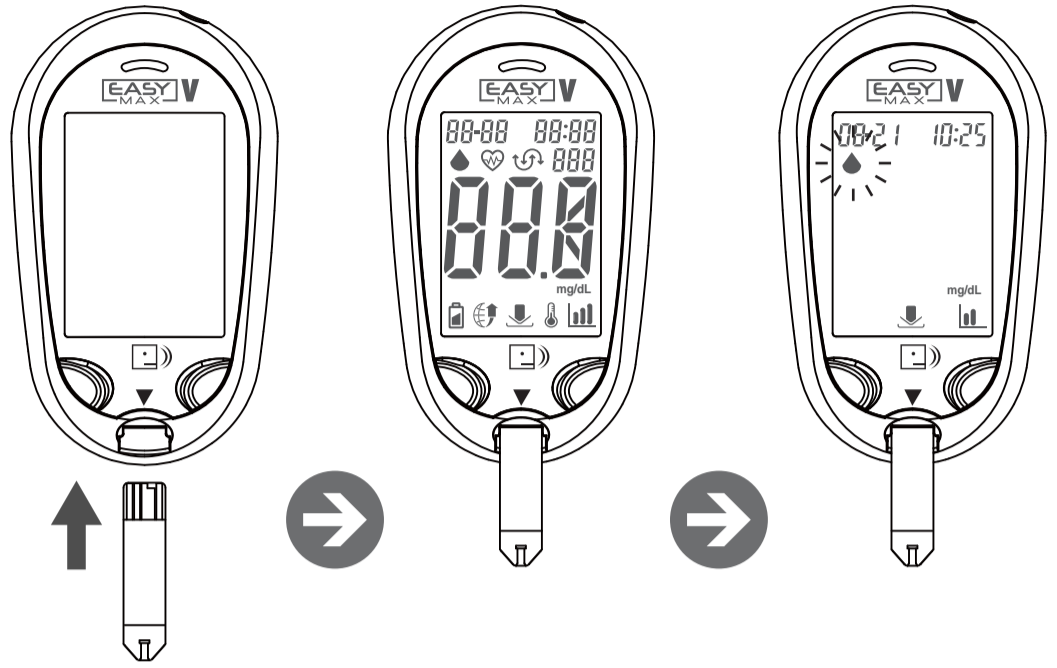
**3 Control Solution Testing**  
Check the expiration date and **type** (Low, Normal or High) on the vial of control solution prior to performing a Control Solution Test. Clean the tip of the control solution cap with tissue. Then put a drop of control solution on the tip of cap as shown in #2 below. Insert test strip into meter and it will automatically power on. Press the left button to put meter in Control Solution testing mode. Properly obtain control solution into test strip as shown in #3 below and #5. Check the control solution range printed on the vial of test strips; if within range then meter is working properly, if out of range, then repeat the steps and if same result, contact customer service.



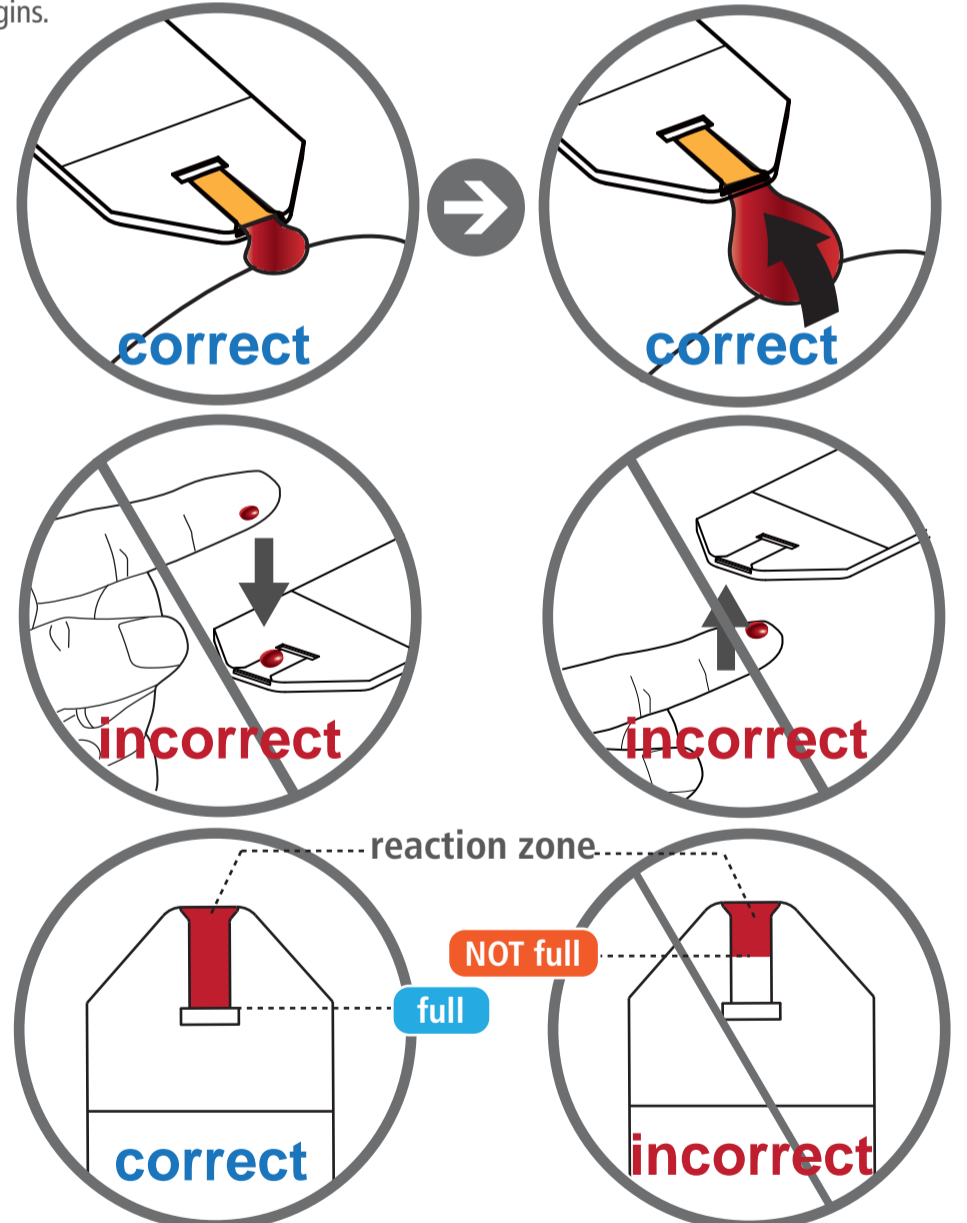
**Important Safety Information**  
Don't drip Control Solution to the entry of the test strip directly. The reagent on test strip might be drawn into the bottle of Control Solution to cause the degeneration as well as might contaminate the meter via the test strip.



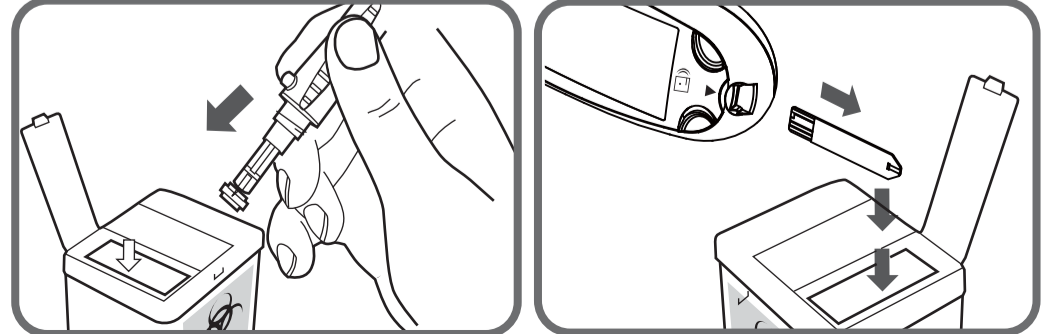
**4 Blood Testing**  
Insert EasyMax Test Strip into Meter. The Meter turns on automatically, then a blank screen with current date & time appears, then a drop of blood appears on the display screen to tell you that your meter is ready for a test.



**5 Correct / Incorrect Testing Procedures**  
Insert EasyMax Test Strip into Meter. The Meter turns on automatically, then a blank screen with current date & time appears, then a drop of blood appears on the display screen to tell you that your meter is ready for a test. Obtain blood sample and apply to EasyMax Test Strip. Use your lancing device and lancet to obtain a small droplet of blood (only 0.6 microliters needed). Touch the tip of the Test Strip (holding the Meter) to the droplet. Capillary action will pull the sample into the Strip, and when enough blood is detected the Meter will beep and the test begins.

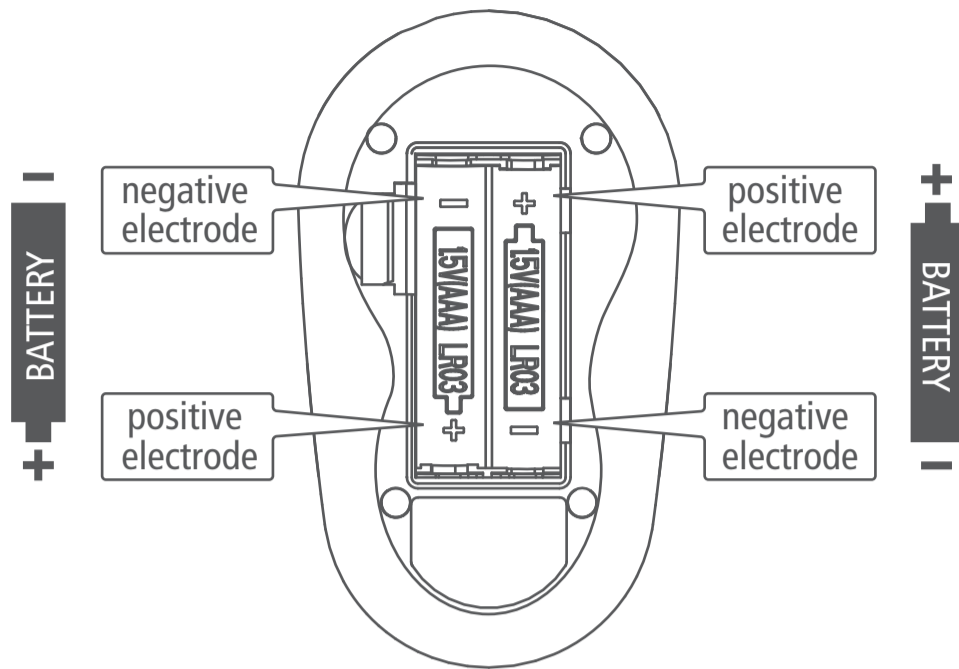


**7** Discard the Test Strip and Lancet into an appropriate sharps or biohazard container. Hold the meter over the container and carefully discard test strip and lancet. The meter shuts off automatically once the strip is removed.

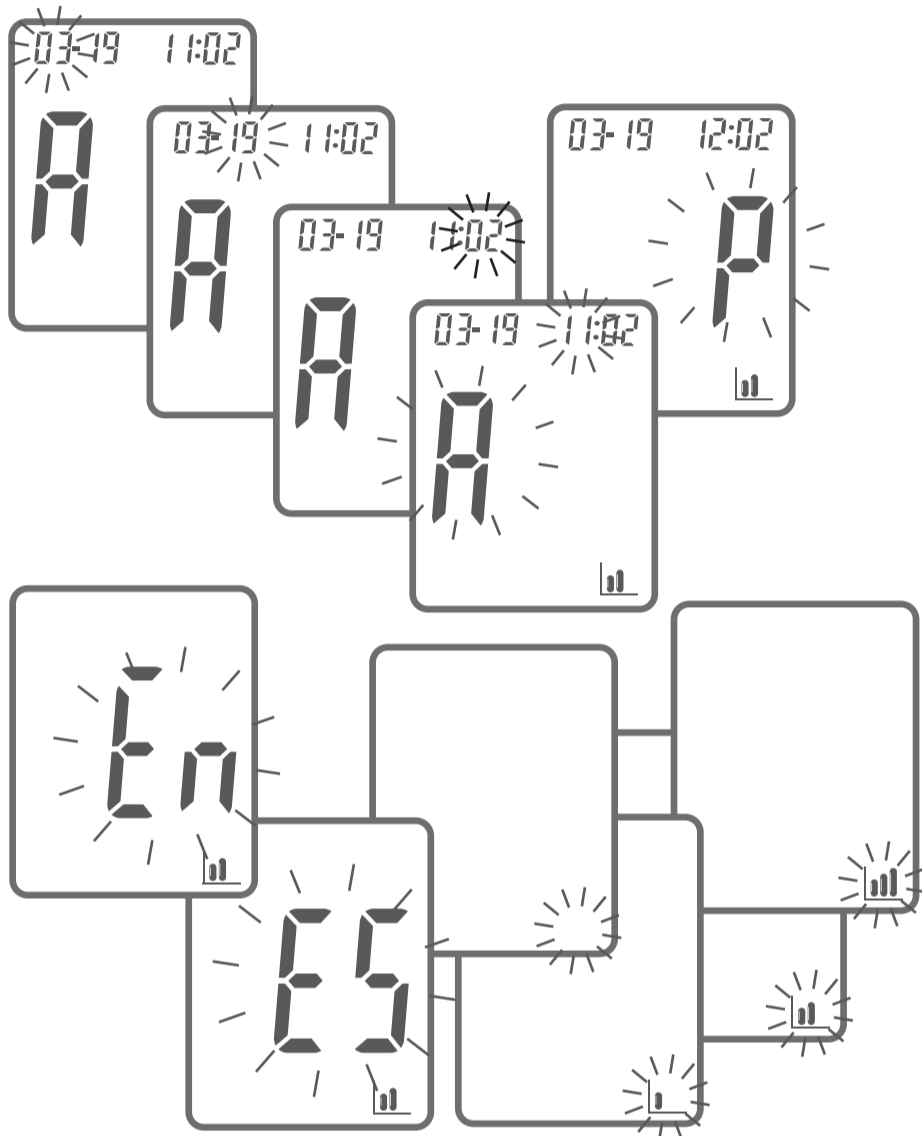


**1** Insert the batteries and the Year will first appear and blink at the top left. Press left button to adjust the Year and right button the confirm Year. Month, date and time will next appear on the top of meter screen. Press left button to adjust Month and right button the confirm month, use this same process for date. Next the hour for time will blink, press left button to adjust hour, right button to confirm hour. Minutes will next blink and adjust minutes by pressing left button and right to confirm. **Note\* in case you incorrectly input the month, date and time, you can take out one battery and reinsert and begin the process again.** Next, option for English or Spanish will appear, press the left button to adjust language and right to confirm. Lastly the volume bar will appear at the bottom right corner, press the left button to adjust the volume settings and right to confirm. **Note\* when pressing the left button to adjust volume, if the screen is blank, it means the meter is in mute mode.**

Installing the batteries – please pay attention to the positive (+) and negative (-) of the batteries when you open the battery cover and insert two 1.5V (AAA) alkaline batteries. We recommend high quality batteries only.



**Screen Messages and Troubleshooting** - Never make treatment decisions based on an error message. If you have any concern, please call customer service toll-free at 866-994-3345, or your current healthcare provider.



<b>E-1</b>	<p><b>System error</b> <b>Action:</b> Remove and re-install the batteries first. If E-1 appears again, please call Customer Service toll-free 866-994-3345.</p>	<b>E-2</b>
------------	---	------------

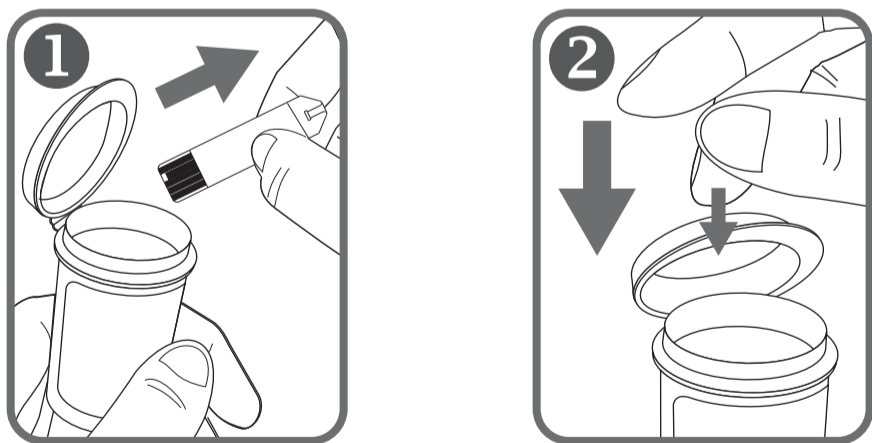
<b>E-3</b>	<p><b>Humidified/Used strips</b> <b>Action:</b> Replace with a new strip. Refer to manual pages 26-31 for further information.</p>	<b>E-4</b>
------------	--	------------

<b>E-5</b>	<p><b>Memory error</b> <b>Action:</b> Replace the batteries first. If E-5 appears again, please call Customer Service toll-free 866-994-3345.</p>	<b>LP</b>
------------	---	-----------

<b>H1</b>	<p><b>Test result is higher than 600 mg/dL</b> <b>Action:</b> Test again. If the result is still the same, try a control solution test and if the control solution test falls within the correct range, please contact your healthcare provider.</p>	<b>L0</b>
-----------	--	-----------

<b>HF</b>	<p><b>The "HF" and thermometer icon appears. Temperature is too high</b>, outside the required range of 50°F - 104°F (10°C - 40°C). This alerts users that an incorrect result may occur if the test continues. <b>Action:</b> Relocate the meter to a location with temperature between 50°F - 104°F (10°C - 40°C).</p>	<b>LF</b>
-----------	--	-----------

**2** Always keep the test strips in the original bottle. Tightly close the bottle immediately after removing a test strip. The bottle is designed to keep the test strips dry. Exposure to room humidity from leaving the bottle open or not storing them in the original bottle can damage your test strips. **This could lead to inaccurate test results.**



**Important Safety Information**

- Wash and dry your hands well before and after testing.
- Test strips are for single use only.
- Do not use a test strip that appears damaged or has been used.
- Your test strip is designed to easily "sip" the blood into the sample tip. Do not drop blood directly on the flat surface of the test strip.
- Do not press the test strip against your finger when testing. This may block the sample tip.